

## How does this work?

### Within lots

Permeable surface and plant beds where water has an easy way down into the soil.



### In streets

Water runs into rain gardens along streets where it either infiltrates into the ground or runs forward between the beds toward a recipient, such as streams or the sea.



### In green areas

The areas are designed so that water can collect there safely during heavy rains.



# Blue-Green Grundarfjörður

Grundarfjörður Municipality has received a LIFE grant from the EU to improve drainage issues in the town with blue-green solutions. These are solutions that have proven successful in many other places.

Here you can learn how blue-green solutions are utilized to beautify the town and tackle increased precipitation in an economical way.



english/polish

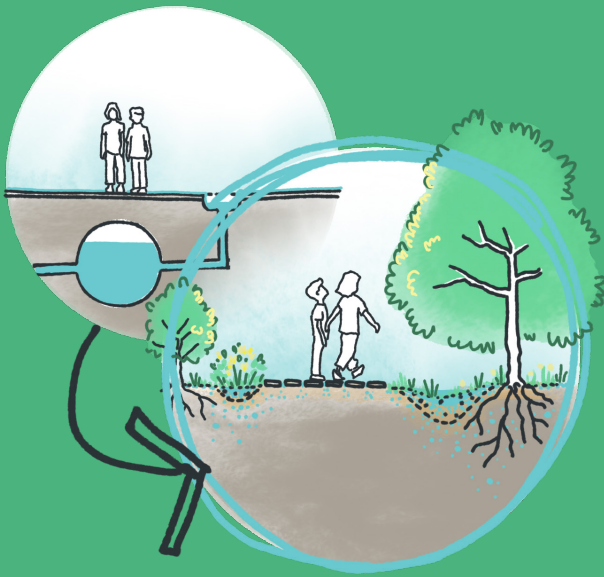
Do you want to know more?

More detailed information can be found on the Grundarfjörður Municipality website.



## Thriving Grundarfjörður

Grundarfjörður will become greener, more vegetated, and more pedestrian-friendly.



The rainwater is used to nourish vegetation, greenify and beautify public spaces, instead of being directed into underground pipes.

Investment is made in a greener and more welcoming town, and avoids spending money on ever-larger underground piping.

A greener and more beautiful environment encourages outdoor activity, promotes better public health, strengthens the ecosystem, and increases biological diversity.

## Progressive Grundarfjörður

The drainage system will be relieved by blue-green solutions instead of underground pipes.



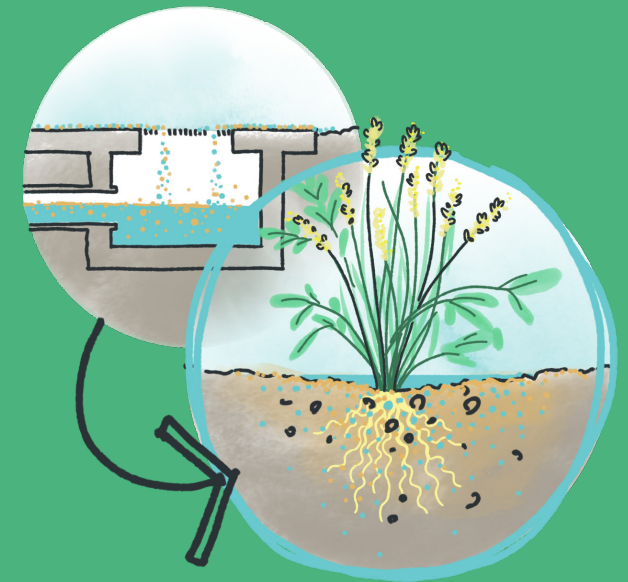
Grundarfjörður will be at the forefront in Iceland in implementing modern drainage solutions.

Blue-green rainwater solutions are utilized to relieve the drainage system, which cannot handle the load, in a growing municipality.

Sewage treatment will be easier and more cost-effective.

## Ecological Grundarfjörður

Nature-based solutions reduce the risk of flooding and clean up pollution.



Nature-based solutions bind water to the soil and alleviate the strain on the infrastructure due to increased precipitation.

Pollution from streets is filtered out of the rainwater before it reaches the sea.

The implementation of blue-green solutions is both a mitigation measure and an important adaptation to climate change.